

First Position Flash Cards

Cut on solid lines, fold on dotted lines.

On top left is the finger and string it is on, below in quotes is the basic note name. On the right is its placement on the music staff. Try identifying by placement and turning the card over to reveal the fingering. We will learn about sharps and flats later...

Any questions, just send me a *note*.
Ed Davis, violinteacher@earthlink.net
www.stringschool.com

	cut	<i>fold</i>	cut
cut	4e "B"	<u><i>o</i></u> _____ _____ _____ _____	
cut			

0g

“G”

0

1g

“A”

0

2g

“B”

0

3g

“C”

0

4g/0d

“D”

0

1d

“E”

0

2d

“F”

0

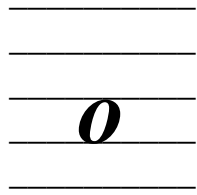
3d

“G”

0

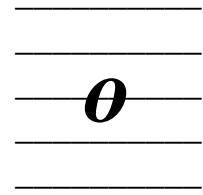
4d/0a

“A”



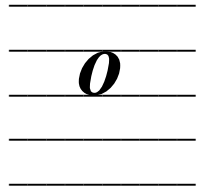
1a

“B”



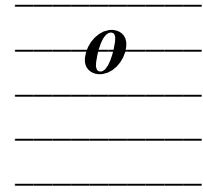
2a

“C”



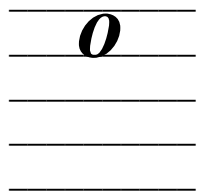
3a

“D”



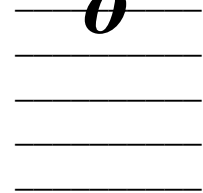
4a/0e

“E”



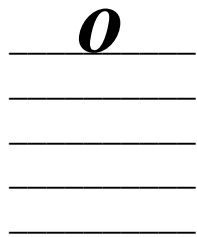
1e

“F”



2e

“G”



3e

“A”

